

# LUIZA GOTTSCHALK: LIGHT\_AIR

In the studio, I discovered an artist who is both a surface director and a painter. Gottschalk's work merges the visceral dynamics of performance with a discreet architectural rigor.



## BY SIMON WATSON

A dark, gothic colossus was my first powerful flash of inspiration when I saw a painting by Luiza Gottschalk in August 2023. That initial encounter—an abstraction reminiscent of a forest, executed with a theatrical sense of scale and melancholy—impelled me to visit her studio three days later. Raised in the mountainous interior of São Paulo state, Gottschalk embraced performance art in her teens; today, she translates that performative impulse into painting, spilling and tearing theatrical canvases to create staged material fields that resemble ritual runes.

In the studio, I discovered an artist who is both a director of surfaces and a painter. Gottschalk's work fuses the visceral dynamics of performance with a discreet architectural rigor: curtains become layers, tears and seams record time, and spilled pigments suspend gestures between control and chance. Her paintings, though rooted in the Brazilian landscape and theatrical practice, speak an international visual language—a language that prompted a conversation about connecting her work to the New York art scene through my *LUZ\_AIR* residency program .



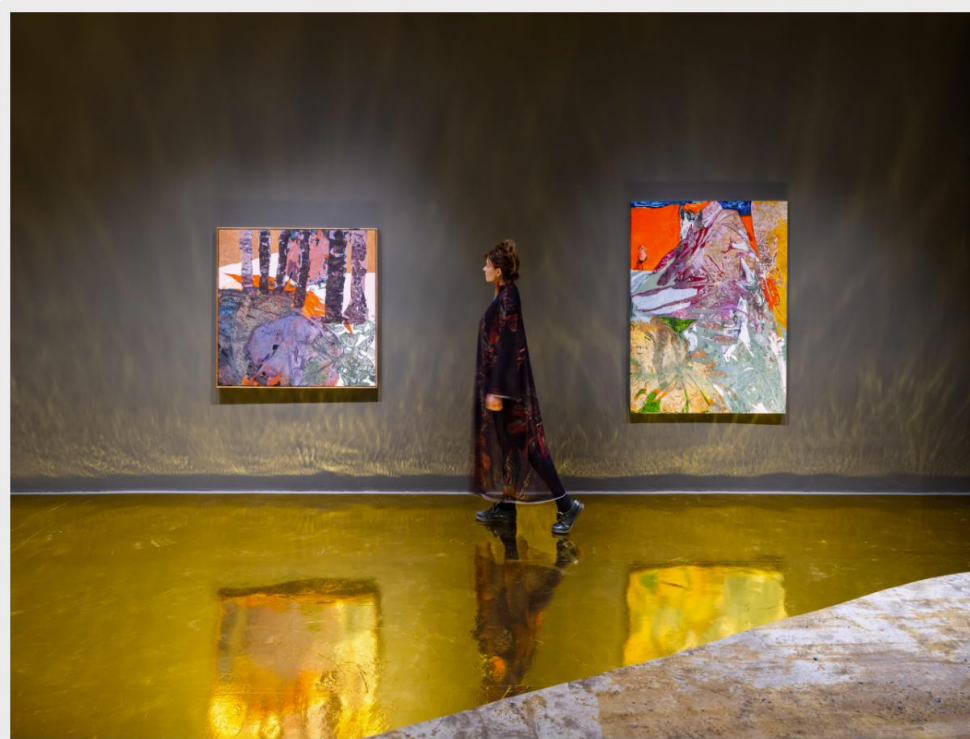
Photos: On White Wall

*LUZ\_AIR* is a personalized artist residency operating in Lisbon, New York, and São Paulo. The artist-centered program offers practical guidance and career planning led by myself and *international liaison* Xavier Auza, with an emphasis on studio development and practical strategies for international launch. Participants engage in Socratic dialogues with colleagues, critics, curators, and collectors.



Photos: On White Wall

We developed a two-phase introduction. The first phase consisted of a three-month residency at ISCP in Queens, complemented by weekly visits to galleries and museums, guided by renowned New York critics, curators, and collectors. This residency directly resulted in invitations to three curated exhibitions in Chelsea, one of which culminated in the presentation of *SOL* at SLAG&RX between April and May 2026. The second phase consisted of a nine-month residency at ARTS 14C in Jersey City, where Gottschalk produced the paintings and installation of the *SOL* series ; *LUZ\_AIR* organized a preview for collectors in January 2026.



Photos: On White Wall

*SOL* is more than an exhibition; it's a journey—an installation that guides visitors through the sun as a vibration of life. The show brings together elements from the artist's projects to create an environment where painting, space, and perception converge. Gottschalk's paintings are presented in a setting designed for the project by Tito Ficarelli of ARKITITO: walls in deep tones evoke the density of the tropical forest, while a golden metallic floor reflects the sun's glow in the exhibition space.



*The results of these "Made in New York" residencies have been impressive. Gottschalk's SOL series has attracted collectors worldwide and sparked institutional interest, with ongoing discussions to bring the series to museums in the United States and China. The theatricality and drama of the work suggest an artist whose international profile is only beginning to solidify.*

***SIMON WATSON IS AN INDEPENDENT CURATOR AND ART EDUCATOR WHO CURRENTLY DIVIDES HIS TIME BETWEEN NEW YORK AND SÃO PAULO.***